

# ESSENTIALS IN PEDIATRIC RADIOLOGY

TRAINING FOR CENTRAL (AND FORMER EASTERN) EUROPE

This is an **European Society of Paediatric Radiology (ESPR)** initiative, at present run as an inter-university project, supported by the **Committee of the Pediatric Radiology Group of the Romanian Radiological Society (GRP-SRIM)**, as a cooperation of the University of Medicine and Pharmacy "Iuliu Hatieganu" in Cluj-Napoca (UMF) / Romania and the Division of Pediatric Radiology, Department of Radiology, Medical University of Graz (MUG) / Austria.



European Society of Paediatric Radiology



[WWW.RADIOLOGIE-PEDIATRICA.RO/COURSE-2016](http://WWW.RADIOLOGIE-PEDIATRICA.RO/COURSE-2016)



COURSE  
CLUJ-NAPOCA  
JUNE 14-17 2016

# ESSENTIALS IN PEDIATRIC RADIOLOGY

## PROGRAMME (JUNE 14-17)

### Morning lectures

The methods and their pediatric applications will be presented - Radiography and Fluoroscopy, Ultrasound, CT and nuclear medicine, MRI and basics for interventions

### Morning Hands-on / participation in clinical routine in small groups

### Afternoon lectures

System and age oriented, specific paediatric challenges (NAI, trauma imaging, etc.)

### Afternoon workshops

Case-based interactive session in small groups focussing on symptom oriented imaging (in small groups)

## COURSE LANGUAGE

English

## COURSE LOCATION

### Hotel UMF "Socrate" Cluj-Napoca

Strada General Eremia Grigorescu 2-4  
400304 Cluj-Napoca, Romania  
Phone: +40 (0)264 420552

## ACCOMODATION / HOTEL

To be booked individually

## DIRECTORS

Michael RICCABONA, Erich SORANTIN - Graz / AT

## LOCAL ORGANISERS

Sorin Marian DUDEA, Carmen-Ana ASAVOAIIE,  
and Otilia-Maria FUFUZAN - Cluj-Napoca / RO  
Bogdan-Stefan OLTEANU - Bucharest / RO

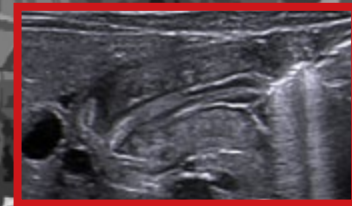
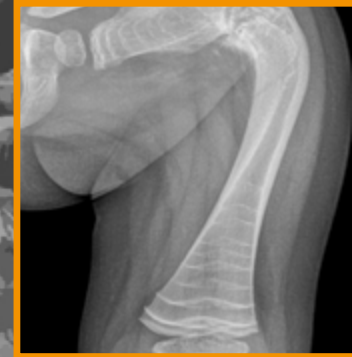
## APPLICATION CRITERIA

Maximum 30 participants (20 from Romania, 10 from countries such as Albania, Baltic states, Belarus, Bosnia and Herzegovina, Bulgaria, Kosovo, Macedonia, Moldavia, Montenegro, Slovakia, or Ukraine).

Young certified radiologists (first years after certification) or last-year residents, wanting to commit themselves (in a significant proportion) to pediatric radiology, employed (under a long-time or undetermined time contract) in a big hospital (county or municipal hospital or mono-specialty hospital) having at least 1-2 pediatric clinical departments and at least 3-4 radiologists, but no dedicated pediatric radiology.

Applicants of areas with the least pediatric radiology service and training will be given priority. First come first serve, if criteria do not allow a ranking of applicants. Applicants will be screened for adequacy in cooperation with the national societies.

A few travel grants (200€ or 350€) will be provided by the ESPR for very-low-income countries, on a first-come first-served basis. A proof of overall income should be provided together with the application for registration, if a grant is requested. Reimbursements will be made after the end of the course; proof of costs will be necessary.



## REGISTRATION & INFORMATION

[www.radiologie-pediatria.ro/course-2016](http://www.radiologie-pediatria.ro/course-2016)

**E-mail:** [contact@radiologie-pediatria.ro](mailto:contact@radiologie-pediatria.ro)

**Registration:** March 1 - May 15

**Selection deadline:** until April 29

**Notification deadline:** by beginning of May

**Payment deadline:** by May 25

## REGISTRATION FEES

100€ / Residents 50€ (proof requested)

- coffee brakes and lunch included
- to be paid in advance as soon as the participation is confirmed / granted